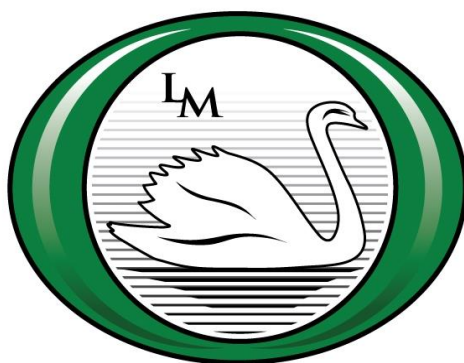


LITTLE MARLOW
PARISH COUNCIL



YOUR COUNCIL FOR YOUR AREA

NEWSLETTER NO: 31

SPRING 2016



Dear Little Marlow Resident,

Welcome to the latest edition of the Parish Newsletter! As usual it is packed with information about what has been keeping the Parish Council busy over the last few months as well as details of what else is happening in Little Marlow.

I am delighted to announce that the Parish Council has achieved the Quality Award in the new Local Council Award Scheme and furthermore was one of the first Parish Councils in Bucks to do so. It is great to have confirmation that not only is the Council doing all that it is required to do but that it is doing so to a high professional standard.

We hope that you will benefit from the various improvements we have made or will shortly be making to the amenities round the parish some of which are highlighted in this newsletter. These include the children's play area on the recreation ground, the allotments, the car park at Abbotsbrook Hall and the cemetery. We are also continuing with our efforts to improve road safety in the parish. The installation of a Vehicle Activated Sign on Sheepridge Lane is imminent and we hope will reduce the number of accidents. We have been instrumental in achieving a new Green Path connecting our Parish to Chepping Wycombe Parish and have just secured funding for the creation of a new Green Path between the Rebellion Brewery and Pump Lane North.

I am really pleased that for the first time we have an article from Wycombe Phoenix Harriers who train at the Little Marlow Athletics Track and that ALFletics, the organisation which runs the Athletics Track, has supplied us with a list of fixtures at the Track for the coming season. We also welcome the article from the BESJC with news of what the football teams have been up to.

In addition you will find advance notice of a couple of events coming up in the parish: the stained glass exhibition at the Cemetery Chapel at the end of June and the Little Marlow Village Fete on 29 August.

We want to make sure that we are providing information to you in the format which suits you best so please follow up on our request for your views on whether you would like to receive the newsletter electronically in future.

Finally we would love to see you at the Annual Parish Meeting on 29 May as well as our regular Parish Council meetings. Meeting dates are on the last page.

Valerie Brownridge - Chairman LMPC

Local Council Award Scheme – Quality Status



Little Marlow Parish Council are delighted to be awarded Quality Status. This is a new scheme and we are very proud to be one of the first Councils within Buckinghamshire and the UK to be accredited. It gives our Parishioners the reassurance that the Council is adhering to best practice in all areas of its operation. Now we need to make sure that we keep the standard up!

*

Little Marlow Parish Council is on Twitter!



The Council has been registered on Twitter for a number of years, but we sadly don't have many followers. Please follow us on #littlemarlowpc for up to date information on Council activities and other interesting snippets

Little Marlow Parish Council

ANNUAL ACCOUNTS

As this Newsletter goes to press the Accounts for the 2015/16 Financial year haven't been formally audited. This will be undertaken before our Annual Parish Council Meeting on 27th May.

Listed below is break down of costs for the 2015/16 year.

	Income	Expenditure
Administration	£725	£39,845
Precept	£42,065	
Abbotsbrook Hall	£12,016	£7929
Allotments	£470	£1088
Grants*	£34,058	£33,545
Burial Ground	£17,485	£15,399
Pavilion / Recreation Ground	£8,623	£11,462
Devolved Services	£1840.34	£2,727
Total Council to 31st March 2016	£117,281.34	£116,562

* these figures are due to temporarily holding the S106 monies from WDC on behalf of the Country Park, The funds have been returned to WDC as they are now in a position to hold them on behalf of the Country Park..

Little Marlow Parish Council Bank Accounts – 31st March 2015

Current Account	£10,777.31
Precept Account	£5,583.75
Petty Cash	£345.55
Reserves Account	£39,446.59

Precept Increase

In December the Council took the difficult decision to increase the precept for the 2016/17 financial year. It was a decision which wasn't taken lightly. For those of you who don't know what a precept is, it is the amount of money which the parish requests from the District Council, to enable the Parish Council to provide it services to its parishioners.

The Parish Council has a number of projects during this next financial year which require additional funding.

These include:

- The repair of unsafe Memorial Stones in the old section of the grave yard.
- The replacement of obsolete street lights. Two are being replaced in Winchbottom Lane and the Council is aware that there are other lanterns around the parish which no longer manufactured and will need replacing in the course of the year.
- Bucks County Council (BCC) has devolved a number of services to the Parish Council. These include grass cutting in 30mph areas around the parish, slip clearance, some hedge-cutting, street sign cleaning etc. The amount BCC has sent on these services has varied in previous years from around £2500 – around £5000 depending on the work undertaken. We have been allocated a budget of £1707 for the coming year 2016/17. (This is due to BCC's budgets being cut by Central Government). It is important that we maintain this parish to the high standards our parishioners expect, but we will have a short fall in funding which we needed to raise through the precept.

Improvements to Abbotsbrook Hall

- Repairs to the car park. This involves creating a new soakaway to cope with the excess water which concentrates in the middle of the car park when it rains. The car park will be levelled and repairs will be made to the pot holes which have appeared over this very wet winter.
- A new boiler is being fitted to improve the heating as the old boiler is no longer fit for purpose.

- New improved LED Lighting which will be more efficient and cost effective to run over the coming years.
- A projector screen is being installed, so hirers now have the opportunity to use it for presentations etc.
- The cleaning of the outside of the hall. With its proximity to the road, it does suffer from fumes and dirt coming off the road.

Tree Survey

- The Council has a responsibility to maintain the trees in the public areas. This includes Abbotsbrook Hall, the Recreation Ground by the Pavilion and the Burial Ground. In May Wycombe District Council's Tree Officer is undertaking a survey which will allow the Parish Council to develop a plan to correctly manage the trees over a number of years.

To enable the Council to complete these projects required an increase in the precept. In monetary terms, this increase represents approximately £10 per year, per household.

Within Wycombe District only seven parishes haven't increased their precepts this year.

*



**Volunteer and help bring a smile to someone's face...
...our volunteer befrienders do this every day**

Living with dementia can be isolating. Alzheimer's Society volunteer befrienders make a difference. Find out more about volunteering with us by having a chat with Laura or Lisa on 01296 331722 or emailing bucksbefriending@alzheimers.org.uk

We'd love to hear from you.

Alzheimers.org.uk

Alzheimer's Society operates in England, Wales and Northern Ireland.

Registered charity number 296645.



LITTLE MARLOW CHARITY WALK

with Buffet Lunch

In aid of

**Medical
Detection Dogs**



Patron: HRH The Duchess of Cornwall

Sunday 8th May 2016

at

**Lower Winchbottom, Little Marlow,
Bucks, SL7 3RN.**

There are a choice of 3 lengths of walk and all take place entirely over private property through Chiltern woodlands with wonderful vistas, flora and fauna. We regret that this event is not suitable for wheelchairs/pushchairs.

For schedules and entry forms please send a SAE to:

LMCW, Woodland House,
Winchbottom Lane, Little Marlow, Bucks, SL7 3RN.

For enquiries please contact:

Jan Mash on 01628 485552 or Gill Pearce on 07769 681224

ENTRIES LIMITED. Closing date 29th April 2016.

Medical Detection Dogs is a registered charity in England and Wales no. 1124533.

Playground Improvements

The new picnic table has been installed within the playground and it looks fantastic! We would like to thank the Little Marlow Amenities Committee for their substantial donation towards the cost of this new table. We hope our smaller residents enjoy using it.



*

Allotments

It has been a busy time on the Allotments in Chapman Lane. New plot holders have taken possession of their allotments and there is plenty of evidence of digging, planting and general tidying up. Thanks to the Parish Council who arranged for a skip, the accumulated rubbish has been cleared. We are grateful to the allotment holders who turned up on the 19th March to help. The site allocated for a community orchard is once again clear and can be planted with donated (small stock) fruit trees in the Autumn although given the downturn in weather it might not be too late to do so this Spring.

Some of the allotments are rather neglected and owners will be contacted to check they are well and if they will be cultivating their plots so that we can maintain the site to a high standard. Path widths and allotment boundaries will be checked this year. There is a steady demand now and one or two plots are still available at the time of writing.

Jane Vincent – Allotment Warden

*



part of your community

Over the past two years, our club, Wycombe Phoenix Harriers (WPH), has been privileged to call Little Marlow its new home. Residents will have spotted the distinctive green of the new state-of-the-art athletics track and also the field facilities whilst driving to and from Bourne End.

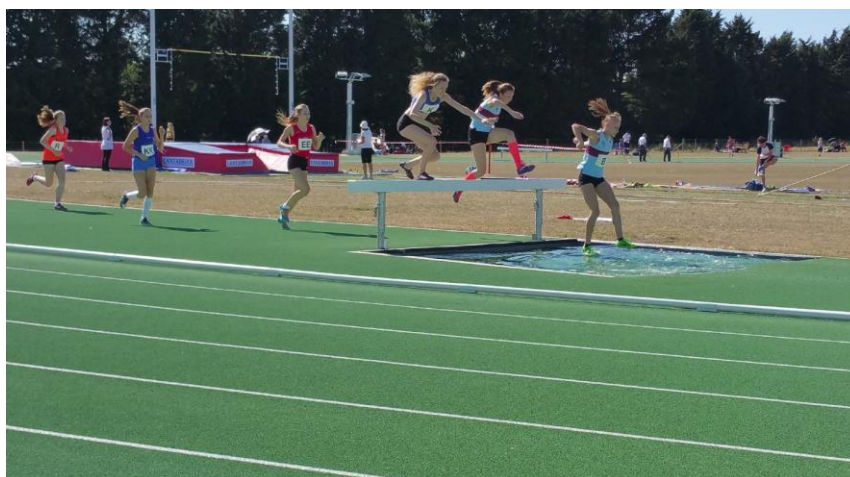
A strong and dynamic athletics club, we pride ourselves on our friendly and welcoming atmosphere where social activities provide additional enjoyment for our athletes. These, supported by specific events, have a positive impact on the spirit and co-operation within the club.

From the outset, we have aimed to be a community based athletics club and this ethos remains today. Drawing athletes of all levels from the surrounding area, we are making huge strides attracting more social runners to the ranks and would love to hear from members of the community who would like to be involved with our club.

Club events

We organise an open cross-country event for local schools every October, which regularly attracts more than 700 local children. Pupils attending are encouraged to help with the organisation and sports leaders from some of the schools offer support marshalling.

In April, we stage our junior club championships, inviting other local clubs to take part. This year it will be held on Sunday, 17 April. A QuadKids competition is incorporated into the meeting for the youngest athletes and a selection of the main track-and- field events are on offer for the under-13 and under- 15 age groups.



Training

Summer

Training in summer is generally from March/April until September/October. Training sessions take place on Tuesdays, Thursdays and Sunday mornings with a few variations between groups and squads.

We have use of the adjoining club and changing rooms and we also make use of the public footpaths close by, including the Chiltern Way and the Thames Path, on which athletes train.

Younger athletes normally train once per week, this frequency increases with age and experience.



Winter

In the winter months, groups switch to one weekly session indoors at the Cressex School, where gym and conditioning work is the priority. Endurance athletes head to the nearby Chiltern Hills, including the National Trust-owned Hughenden Park, for hill training

For athletes aged under 18 years:

We run Induction Sessions for groups of new athletes, as and when there is capacity to take in new members. The initial session takes place on a Sunday morning and lasts approximately 90 minutes. Any athlete wishing to join is required to attend with their parent or guardian. On successful completion of the Induction Session, the new group is given 4 weeks of training (free of charge) after which they may be offered a place.

Athletes aged 18 years and over:

Please enquire via the New Members Secretary via enquiries@wycombephoenix.org. You will not be required to join an Induction Session and we are able to welcome senior athletes at any time.

Contacting the Club:

If you are interested in joining the club please contact Dawn Kingman at enquiries@wycombephoenix.org

For any other non-membership enquiries, please contact the club by sending an email to admin@wycombephoenix.org

For additional information, please visit: <http://www.wycombephoenix.org>



Hello,

I hope everyone has had a lovely Easter and is enjoying the arrival of spring. I have compiled a little list of the dates when the Athletics Track is likely to be busier than usual and the PA system will be being used. In response to demand we have added additional car parking this year. However this additional car parking is unusable if it rains, and so if anyone knows of any hard standing that would be available then please let me know.

17th April – Medium/Large sized (around 200 people) all day event.

4th May – Medium sized (around 100 people) all day event.

5th May – Medium sized (around 80 people) afternoon event.

21st May – Medium/Large event (hoping for 100-150 people) all day event.

22nd May – Cyclists taking part in a time trial are using the track as a base, and so there will be around 100 cyclists coming and going from 6am through to around 11am. The PA system won't be used on this day.

8th June – Medium sized (around 80 people) all day event.

11th June – Medium sized (around 80 people) all day event.

15th June – Medium sized (around 100 people) all day event.

17th June – Make a Wish overnight relay event, starting on the 17th and finishing on the 18th.

19th June – Medium sized (around 100 people) all day event.

20th June – Medium sized (around 100 people) all day event.

20th August - Medium sized (around 100 people) all day event.

24th September – Medium/Large event (hoping for 100-150 people) all day event.

Obviously more bookings will likely appear in the next few months, and so I will update you again if I feel there is anything that you need to be aware of. If you have any questions, my email address is

savannah.catharine@alfcharity.org, and my mobile number is 07890990426.

We are also now open to the public, so do feel free to come by for a run!

Kind regards,

Savannah Catharine (ALFletics)

Glass at the Chapel 2016

Buckinghamshire glass artists Jane Vincent, Marilia Carvalho, Suzanne Raffellini and Tracey Holmes will be exhibiting their work again this year in The Chapel in Little Marlow Cemetery during Bucks Open Studios fortnight. Our exhibition runs from Saturday 18th to Sunday 26th June and we are open daily from 11am to 4pm. The Chapel is located in Fern Lane SL7 3SD and can also be reached via Sheepridge Lane on foot or by car.

This is our seventh year and each year we bring new work for visitors to see, talk about and share enthusiasms and interests in stained glass panels, fused glass pictures, jewellery, decorative work, and kiln formed sculptural objects. Last year we had a lovely response to our themed exhibits based on the Tower of London poppies and this year our theme will be the River Thames.

Glass is a wonderful medium to work with and we each produce very different pieces despite using the same materials and techniques. Over the last year we have all been working on bigger projects for exhibitions further afield. Marilia has opened her new studio in Burnham and welcomed many of our Open Studios visitors to her workshops where you can make your own piece of leaded stained glass. Suzanne is teaching stained glass at Highcrest Adult Education Centre and also offers classes in Chesham Bois where she is part of the Amersham Artisans Group. Tracey, from Marlow, is working in interior design but continues to make her work for fairs during the year and Jane who lives in Well End, combines her academic sociological and media research with her designs for exhibition work – come and find out more about what we do and be inspired!

The peaceful setting of The Chapel is a wonderful venue for our work and we are pleased to have this opportunity to meet and share our love of glass with so many local visitors – do come and see us and look out for the Marlow Art Trail – leaflets available or email Jane for a copy of the trail leaflet

janevincentglass@abbeyrisestudio.co.uk, Open Studios brochures are also available. www.bucksopenstudios.org.uk

*

Road Safety – Sheepridge Lane

It seems to be ground hog day when we keep talking about the installation of the Vehicle Activated Sign in Sheepridge Lane. Whilst it is disappointing it hasn't arrived yet, it is currently being manufactured and the latest date we have for installation is May. Fingers crossed when you receive the Autumn newsletter it will be in place. We were delighted that Bucks County Council has improved the signage around the bends and there is a new surface on the actual bends which is meant to provide slightly more grip. We really hope all these measures will reduce the number of accidents. Sadly all these improvements won't help the motorists who drive too fast on Sheepridge Lane and end up parking their cars in the ditch!

*



Planning an event and need a location?

ABBOTSBROOK HALL & THE PAVILION

Are available for Hire

Preferential rates for Parishioners of Little Marlow.

Contact – Pavilion Hire – 01628 890301

Abbotsbrook Hall – 01628 528936



*

PUMP HUNT FOR SEWAGE STATION OWNERS

- ☐ **Thames Water to take on the responsibility of 4,000 sewage pumping stations from property owners and managers**
- ☐ **Utility will take over electricity and maintenance costs under new legislation, potentially saving customers thousands of pounds**
- ☐ **Firm appeals for help tracking 1,800 ‘missing’ stations**

Thames Water is appealing to customers to help identify privately owned sewage pumping stations.

The utility, which serves 15 million customers across London and the Thames Valley, will take responsibility for around 4,000 pumping stations in October 2016, but needs to track down 1,800 currently off its radar.

New legislation means sewage pumping stations, which power wastewater away from properties and out into the public sewer pipe network, currently owned and maintained by customers will become legally owned and operated by the local water company.

The pumping stations are found in all shapes and sizes, and can be in places where there are a number of properties needing to connect to the public sewer network. Customers will know they have one as they’ll be paying to maintain and power them.

Jerry White, of Thames Water, said: “This is really good news for customers. We’d urge anyone who thinks they may have one to get in touch so we can check they are eligible for the transfer of ownership. In some cases, as well as electricity savings, maintaining and replacing pumps can cost thousands of pounds so it’s an excellent deal for them.

“We believe we know where approximately half of the stations we need to take over are, but really need help to find the other 1,800. Please get in touch if you think this applies to you and we can take on the responsibility forever.”

Anyone with a private pumping station can make Thames Water aware at thameswater.co.uk/pumphunt

*

Tree Dedication to long serving Councillors and retired Clerk

We were delighted to welcome back retired Councillors Dallas Banfield, Barbara Wallis, Ruby Taylor and retired Clerk Gloria Barclay to the Pavilion in March. The Council was also pleased to welcome Mrs Christine Innocent who is the widow of long serving Councillor Clive Innocent who sadly passed away in 2014.

Five new trees were planted around the Pavilion Recreation Ground and each one was dedicated to an individual Councillor and the retired Clerk. This was to mark their long standing service to Little Marlow Parish Council and the local community. Their combined service to Little Marlow Parish adds up to over 100 years!

It was great to welcome the Maidenhead Advertiser who reported on the occasion. We took pictures of each person with their respective tree and then had a lovely afternoon tea to celebrate!



*

Is your Hedge or Tree overhanging the public highway?

www.buckscc.gov.uk/transport
Live twitter feeds @tfbalerts

Transport for Buckinghamshire (TfB) on behalf of Buckinghamshire County Council would remind home and land owners that it is their responsibility to keep the highway free from overhanging trees, shrubs and overgrown bushes etc. Landowners must ensure that there is no obstruction or partial obstruction to the footway or carriageway.

TfB regularly makes inspections and also receives reports regarding obstructions on the highway. If you are notified, TfB would ask that you arrange to have any obstruction cut back within 14 days.

Should you be unable to complete the work by the end of this period of notice, TfB may arrange for the work to be carried out and may claim reimbursement from the landowner for reasonable expenses following completion of the works, in accordance with Section 154(4) of the Highways Act.

Thank you for your cooperation in this matter and please do not hesitate to contact 01296 382416 to discuss this further should you wish, and also, if needed, how TfB may be able to assist you in carrying out these works.

To report a highway fault please visit **www.buckscc.gov.uk/transport**
Follow us on Twitter **@tfbalerts**

Little Marlow Village Fete, 29th August 2016

Summer may seem a long way away but it will be here before you know it, as will the Little Marlow Village Fete. The details which you need to put in your diaries right now so as to be sure that you do not plan anything else for that day are: **2pm - 5pm** on August Bank Holiday Monday, **29th August** on the **Little Marlow Recreation Ground (off Church Road)**.

I know that we haven't had much luck with the weather for the last two years, but I have a feeling that the sun is going to shine for us this year! The Amenities Committee has already started working on this year's Fete. As well as the usual stalls selling home baking, jams, plants, vegetables, bric-a-brac and books, we are also planning to have a wide range of activities including children's races, face painting, Bouncy Castle, children's rides, coconut shy, plate smashing, soccer sideshow, a tombola and a fun dog show. You won't go hungry or thirsty: there will be afternoon tea served in the Pavilion, hamburgers on sale at the BBQ stall and of course ice cream and soft drinks. Music will again be provided by the Chiltern Jazz Quartet.

After the success of last year's Tug of War between teams from our two great village pubs, the King's Head and the Queen's Head, which resulted in an honourable draw, we are planning to stage a re-run at this year's Fete. James Wilkie has kindly volunteered to mastermind this again. Please contact him on 07545 391977 for more information. Both pub landlords will be looking for volunteers to join their teams. We are also considering having a women's tug of war if a sufficient number of women express an interest in taking part. Now there's a challenge for all you feisty women out there!

I now come to the bit I repeat every year but only because we cannot have a village Fete without your support and we don't ever take this for granted. One of the reasons we are able to call our fete a "Village Fete" is that so many residents from the village and neighbouring communities get involved by helping on the day in a variety of ways, by contributing goods to the various stalls, by buying tickets for the Grand Draw or by simply coming along to join in the fun. Here is a reminder of the ways you can support us again this year:

Provide Prizes for the Tombola eg sweets, chocolates, toiletries, bottles, games, gadgets, toys. We will take anything provided it is new. Items need to be ticketed ahead of the day so please contact Martin Braint on 07967 217182 before Sunday 28th August to arrange a time to drop off your prizes.

Donate Goods for the bric-a-brac Start collecting now so that you have a lovely box of goodies ready to drop off at the bric-a-brac stall on 29 August. Your unwanted goods could become someone else's treasures! It would be helpful to have your bric-a-brac before 12 noon.

Supply Books for the Book stall Create some space on your bookshelves by donating the books you have already read. Just bring them along on the day, preferably before 12 noon.

Donate Home baking We need lots of home made cakes and biscuits for the home baking stall and the afternoon teas, so please bake for us. Baked goods can be delivered to the home baking stall or the tea pavilion from 11.30 -1pm on 29 August.

Volunteer to help on the day with setting up, parking, manning the stalls or serving the teas. Even 30 minutes of your time would be a great help. If you would like to volunteer, please contact me on 01628 523367.

Buy tickets for the Grand Draw beforehand and on the day.

And most importantly, come along on 29 August!

As in previous years, the proceeds from the Fete will go to local good causes and to projects and activities which benefit the residents of Little Marlow.

Valerie Brownridge

Chairman, Little Marlow Village Amenities Committee



Little Marlow Village Fete 2015 - before the sun came out!

What does a Community First Responder do?

Community First Responders(CFRs) use life-saving skills, such as the use of the automated external defibrillator (AED), to provide early and often vital intervention for patients suffering life-threatening emergencies in the immediate vicinity of where they live or work. Once an ambulance crew arrives at the scene, CFRs work alongside a clinically qualified practitioner

How do they know what to do?

Community First Responders are trained by us to provide life-saving treatment at a recognized level and they are always backed up with the nearest available ambulance. Every six months, there is a compulsory training to refresh skills. There is also an opportunity for CFRs to have monthly refresher training on skills or treatment .

Types of calls a Community First Responder might attend:

- Cardiac arrest
- Heart attack
- Strokes
- Choking
- Diabetic emergencies
- Traumatic emergencies (not road traffic collisions)
- Breathing difficulties
- Patients suffering from seizures
- Chest Pains
- Unconscious patients
- Pediatric and children aged one year and over.

Why are CFRs so valuable and vital?

In case of cardiac arrest, for every minute that passes without cardio-pulmonary resuscitation (CPR) and defibrillation, a patient's chances of survival decreases by 14%.

Community First Responders answer calls in their neighborhood, therefore, the potential for them to arrive on scene before an ambulance, especially in rural areas, is vital in providing immediate life-saving treatment. These extra minutes do help to save lives.

Interested in becoming a CFR? Then telephone 0800 587 0207 or email cfr@scas.nhs.uk now



Contact Hazel Finney
Telephone 0300 1111250
Email hazel@communityimpactbucks.org.uk
Website www.communityimpactbucks.org.uk

FOR IMMEDIATE RELEASE
January 12, 2016

Discover Volunteering in 2016

Mix96 presenters become volunteers for the day through Community Impact Bucks

"We're excited to see what the Mix96 presenters will discover during their volunteering adventures at three of our local charities in Buckinghamshire." –

Nick Phillips, CEO, Community Impact Bucks

We're partnering with Mix96 to launch www.volunteeringbucks.org.uk a website designed to get local people excited about volunteering.

Running for 4 weeks from the 11th of January, the campaign will highlight the fantastic volunteering opportunities in Buckinghamshire, and you'll even be able to hear the presenters getting out of the studio and doing some volunteering at three local charities. You can see the full details of what they get up to here: www.mix96.co.uk/volunteering.php

So... here's to a New Year, a New You – and Discovering Volunteering. Try something new in 2016 and make a positive change in your life and your community!

Volunteer Stories: We have a selection of short [interviews](#) with real volunteers sharing what makes volunteering so rewarding for some of the people volunteering in the organisations we're highlighting.

Why is this website needed?

Overall, **56%** of Buckinghamshire residents have volunteered in the past 12 months, fewer than in the previous survey - 85% 2011. Sample of 1000 residents, view [statistic sources](#).

If you would like more information about this topic, please contact Hazel Finney at 0300 1111250 or email at hazel@communityimpactbucks.org.uk

Green Paths – Sheepridge Lane, Heath End Road and Wycombe Road

What is a green path? It is a way of producing a safe path for pedestrians without over urbanising the beautiful rural nature of the parish.

A path was created in Sheepridge Lane a number of years ago. The very last section from the roundabout (at the Bourne End side) to the Burial Ground entrance, has become overgrown. We are working with the local land owners and Transport for Bucks to get this section re-cut and usable. We are currently coming into the nesting season for birds but hope that it will cut back afterwards.

Little Marlow Parish Council worked in conjunction with Chepping Wycombe Parish to create a Green Path which connected both of our parishes. We were very pleased to be awarded funding from Bucks County Council's Chepping Wycombe's Local Area Forum. The work was completed in January and we are very pleased with the result. It is proving popular with residents already.



The Green Path on Heath End Road

The Wycombe Road (C100) is another road which doesn't have a pavement for pedestrians to use. In October Little Marlow Parish Council applied to Wycombe District Council for funding from the Community Infrastructure Levy. Following a consultation process, we were very pleased to secure funding for the formation of a new path along this road. It will start at the Rebellion Brewery and finish at Pump Lane North. We hope this project will be completed in the summer.

Bourne End Junior Sports Club (Football Section)

At the time of writing this article, Bourne End Junior Sports Club (“BEJSC”) football teams are getting to the latter stages of the season. To date, the season has been a very successful one for all the age group teams in terms of match results and player development. We have good numbers attending the very popular ‘Junior Kickers (U6’s) coaching sessions at the Sports Club on Saturday mornings and some very good performances from the Mini-Soccer teams (U7’s to U13’s) in their non-competitive matches. Currently all the competitive teams (U14’s to U21’s) are in the top half of their respective league divisions and some have progressed well in their Cup competitions. Notably, our U14’s team (who play at Little Marlow Rec) are third in the first division, with games in hand over the teams above. They also reached the quarter-finals of the B&B FA County Cup and the semi-finals of the WSBMFL league cup, but eventually lost both matches on penalties to Tattenhoe Youth FC and Penn & Tylers Green, respectively. Our U14’s Colts teams (who play at Little Marlow Rec) are top of division four, whilst our U15’s are midway in division two, but have also reached the WSBMFL Referee’s Cup Final, where they will play Thame Boys FC at Marlow FC on Sunday 1st May – KO 1:00pm. Finally, our U16’s and U21’s teams are currently second in division one of their respective leagues.

Planning has already started for the Club’s annual junior football tournament “Sportsfest’23” at Wooburn Park on Saturday 11th June and for next season. This year will be the 23rd year that the Club has held this very popular and established community event. We are hoping that teams from SC Octeville (Octeville-Sur-Mer, Bourne End’s twin town in France), will be able take part again in this year’s tournament. Next season, we will be running teams at all age groups (U7’s to U21’s), plus our very popular “Junior Kickers” coaching sessions on Saturday mornings for U5’s and U6’s, a fun approach to developing a child’s ball and social skills.

*

INVITATION TO ALL PARISHIONERS!

Come and discover what the Parish Council does for your community!

Annual Parish Council Meeting

27th May 2016

Abbotsbrook Hall at 8pm

Presentations from the Chairman and other community organisations.

Wine and Nibbles served



How can you resist? Look forward to meeting you there!

Email or paper?

The Council produces its newsletter twice a year in the Spring and Autumn. It has been suggested that some parishioners would prefer to receive the newsletter electronically.

Should you wish to receive the newsletter via email. Please can you email the Clerk on

clerk@littlemarlowparishcouncil.org.uk with the subject heading- **Email Newsletter**. Please give details of your address and you will be added to a database and receive the newsletter electronically.

Our Newsletter is always published on our website so copies can be located there too.

<http://www.littlemarlowparishcouncil.org.uk/publications.html>

*

‘Together, we can tackle child abuse’ - new national campaign

The County Council is supporting a national campaign launched on 3 March by the Department for Education to encourage members of the public to report child abuse.

The campaign’s main message is that if you’re worried about a child or think their safety might be at risk, then it is important to tell someone. You don’t have to be absolutely certain about whether a child is being abused; if you have a feeling that something’s not right, talk to your local children’s social care team who can look into it.

Everyone has a role to play in helping to protect children. All children have a right to be safe and should be protected from all forms of abuse and neglect.

It is not just up to social services, doctors and the police to spot the signs of abuse and neglect. It is important that we all look out for children and young people within our community who may be experiencing abuse or neglect. Members of the public, and particularly other parents, are in a unique position to spot concerns among children with whom they have contact - which may not be apparent to professionals.

Some of the signs of abuse or neglect include changes in:

- **Appearance** – such as frequent unexplained injuries, consistently poor hygiene, matted hair, unexplained gifts, or a parent regularly collecting children from school when drunk
- **Behaviour** - such as demanding or aggressive behavior, frequent lateness or absence from school, avoiding their own family, misusing drugs or alcohol, or being constantly tired
- **Communication** – such as sexual or aggressive language, self-harming, becoming secretive and reluctant to share information or being overly obedient

A third of people who suspect child abuse, do nothing. Some people don’t act on their suspicions because they’re worried about being wrong. It is better to help children as early as possible so that action can be taken to help the child and support the family concerned.

In 2014/15 more than 400,000 children in England were supported because someone noticed they needed help.

If you suspect child abuse or neglect, visit www.gov.uk/reportchildabuse to get the number for your local authority. For Buckinghamshire, call the First Response Team on 0845 460 0001 or email: secure-cypfirstresponse@buckscc.gcsx.gov.uk

Contact Details

Valerie Brownridge, Chairman	01628 523367
Geoff Fitchew, Vice-Chairman	01628 523107
Phillip Emmett	07939142480
Richard Mash	01628 485552
Jason Downes	01628 477189
Kathryn Acres	01628 531521
Vivien Morton	01628 486680
Anthea Falk	01628 483817
Roger Randall	07946 108705
Clerk to the Council: Emma Marsden	01628 890301

Dates for your Diary

Council Meetings:

17th May(Annual Council Meeting)-& Council
Meeting, 28th June, 26th July, 6th September,
18th October, 6th December

**Annual Parish Meeting – 27th May at
Abbotsbrook Hall at 8pm**

All meetings are held at The Pavilion, Church Road, Little Marlow, SL7 3RS.
Most meetings start at 8pm and all public and press are invited to attend.

Little Marlow Parish Council

Community Office

The Pavilion

Church Road

Little Marlow

Bucks SL7 3RS

Tel: 01628 890301

Clerk@littlemarlowparishcouncil.org.uk

www.littlemarlowparishcouncil.org.uk

twitter #littlemarlowpc